



PEST CONTROL DOWN TO A SCIENCE.™

SEASONAL GUIDE TO PESTS

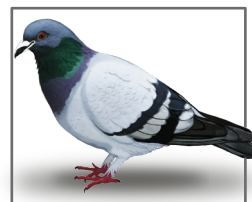
1-800-ORKIN-NOW

orkincommercial.com

BIRDS

DIAGNOSIS

Pigeons, starlings and house sparrows are the three main pest birds. They can carry more than 60 diseases, and their feathers and droppings can lead to health threats, too.



PIGEON

SYMPTOMS

Hot spots for birds include roofs, ledges and outdoor patios. They often gather to socialize with each other, feed on food and drink water, sleep, or breed and create nests. While seasonality differs depending on the type of bird, pigeons may be seen year round.

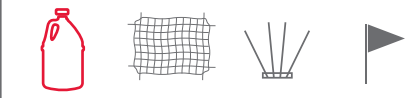


PREVENTION TIPS



EXCLUSION SANITATION

POTENTIAL TREATMENTS

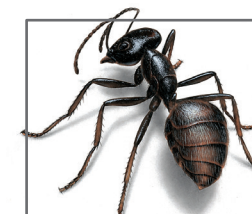


STERILANTS NETTING SPIKES REPELLENTS

ANTS

DIAGNOSIS

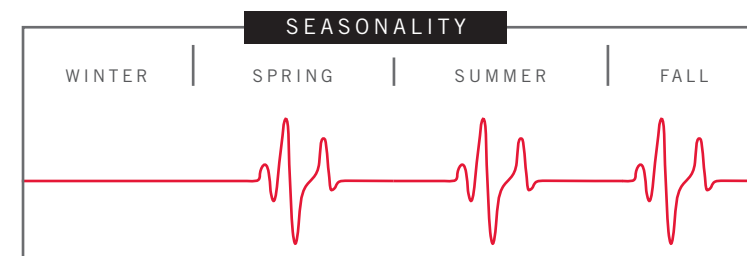
Ants are pests that are resilient for the following reasons: their diet habits change over time; their colonies can have massive populations; they can travel long distances to find food; and they go to great lengths to protect their colonies.



CARPENTER ANT

SYMPTOMS

Inside, ants are often found nesting in walls or beneath the floor. They live in colonies, which can contain one or more queens with more than 100,000 workers, depending on the species.



PREVENTION TIPS



EXCLUSION LANDSCAPING

POTENTIAL TREATMENTS



BAITS PHEROMONES RESIDUALS

To help take your pest prevention program to another level, consider partnering with a pest management company that can design a solution that is based in science.

1-800-ORKIN-NOW | orkincommercial.com



PEST CONTROL DOWN TO A SCIENCE.™

© 2015 Orkin, LLC 1/15

LADYBUGS

DIAGNOSIS

Ladybugs occur in a wide spectrum of colors ranging from yellow to orange to red, and have a varying number of spots. Most prey on aphids, mealybugs and scale insects.



SYMPTOMS

Ladybugs can gather in large numbers on light-colored buildings, where they find holes to get inside healthcare facilities. They hibernate through the winter and become active in late winter and spring. In the fall, they are commonly seen on building exteriors.

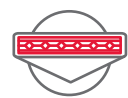


PREVENTION TIPS



EXCLUSION

POTENTIAL TREATMENTS



INSECT LIGHT TRAPS



RESIDUALS

SPIDERS

DIAGNOSIS

If you see spiders in your healthcare facility, it could mean you have a larger pest problem. Spiders live near their food sources, which are actually insects.



HOUSE SPIDER

SYMPTOMS

Depending on the type of spider found at a healthcare facility, evidence of their activity may vary. Spiders hide in numerous places and catch prey in three different ways: webbing, hunting and trapping. While spiders are still active during the winter, they are more active during spring, summer and fall.



PREVENTION TIPS



EXCLUSION SANITATION

POTENTIAL TREATMENTS



GLUEBOARD



RESIDUALS

CRICKETS

DIAGNOSIS

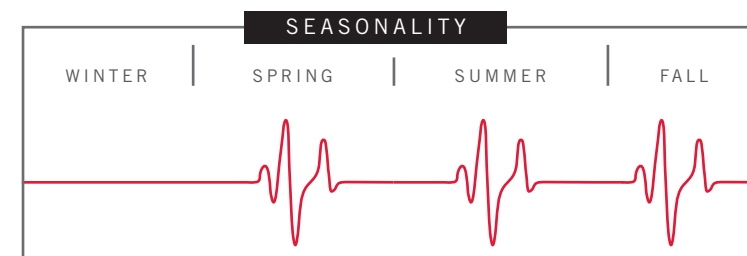
Crickets usually do not pose a health or structural damage threat, but they are a nuisance. Sometimes their chirping is loud enough to interrupt sleep.



HOUSE CRICKET

SYMPTOMS

Crickets are often found around soil and under dead plants. They thrive in areas that offer humidity and moisture and plant cover.



PREVENTION TIPS



EXCLUSION LANDSCAPING

POTENTIAL TREATMENTS



BAITS

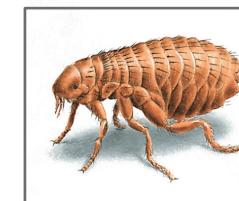


RESIDUALS

FLEAS

DIAGNOSIS

Adult fleas draw blood from host animals like dogs, cats, rabbits, rodents and other domesticated or wild animals and occasionally humans. They can transmit diseases like tapeworm and flea-borne typhus.



SYMPTOMS

Fleas can cause itchy bite marks in humans and cause animals to scratch themselves repeatedly. Flea dirt, or adult flea feces, can indicate activity as well. Flea dirt looks similar to ground black pepper and may be seen in carpets and rugs.



PREVENTION TIPS



ONGOING INSPECTIONS SANITATION

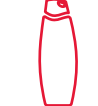
POTENTIAL TREATMENTS



RESIDUALS



INSECT GROWTH REGULATORS



PET TREATMENTS

SEASONAL GUIDE TO PESTS



EXCLUSION

- Install door sweeps and weather stripping around all doors and windows. Also install window screens.
- Seal all cracks and crevices inside and outside your facility.
- Seal all entry points around utility penetrations.
- Install double doors and air curtains for an added pest barrier.



SANITATION

- Thoroughly clean, dust and sweep to help remove dust and dirt buildup or cobwebs.
- Follow a strict daily sanitation regime and remove any clutter like cardboard boxes that offer shelter for pests.
- Remove all food and water spills immediately and store all food and garbage properly in sealed containers.
- Repair leaking faucets, water pipes and HVAC units.
- Get rid of standing water on your roof and keep gutters and downspouts clean.



LANDSCAPING

- Move plants away from the facility's foundation.
- Remove excessive plant cover and wood mulch outdoors. Also trim overgrown branches, plants and bushes.
- Install a 30-inch gravel strip around the perimeter of the facility to obstruct crawling pests and discourage pests that don't like being in the open, such as rodents.



ONGOING INSPECTIONS

- Inspect your facility's exterior and interior for signs of a pest infestation or potential points of entry.
- Inspect items that are prone to pest activity, such as incoming shipments and cardboard materials.
- Manage other pest populations in your facility - spiders live near their food sources, which are actually other insects.

PROACTIVELY DIAGNOSE PEST ACTIVITY TO PROTECT YOUR FACILITY

Use this poster to learn what you must know to protect your facility from pests year-round:

- Pests that are most active during certain points of the year
- Signs that indicate pests are present
- Steps you can take to prevent pest activity
- Potential treatments that your pest management provider may recommend

Remember that Integrated Pest Management's (IPM) non-chemical methods can help prevent pest presence, which can in turn help you protect your staff, patients and reputation from harm.

TERMITES

DIAGNOSIS

Termites are called "silent destroyers" because they can be difficult to detect. These pests cause more than \$5 billion in damage annually in the United States.



SUBTERRANEAN TERMITE

SYMPTOMS

Warning signs of termite infestations may include temporary swarms of winged termites during the spring, discarded wings, cracked or bubbling paint, mud tubes on walls of the building and wood that sounds hollow when tapped.



PREVENTION TIPS

- ONGOING INSPECTIONS (magnifying glass icon)
- SANITATION (hand cleaning icon)

POTENTIAL TREATMENTS

- BAITS (bait container icon)
- RESIDUALS (spray bottle icon)

RODENTS

DIAGNOSIS

Rodents are known carriers of deadly diseases. They don't need a large opening to get inside: rats can squeeze through an opening as small as a quarter, while a mouse can fit into a hole smaller than a dime.



HOUSE MOUSE

SYMPTOMS

Rodent infestations can prove extremely destructive. Signs may include droppings, rub marks or burrows. They tend to gather where food and water is readily available, such as in employee breakrooms or foodservice areas.



PREVENTION TIPS

- EXCLUSION (welcome sign icon)
- SANITATION (hand cleaning icon)
- LANDSCAPING (pruning shears icon)

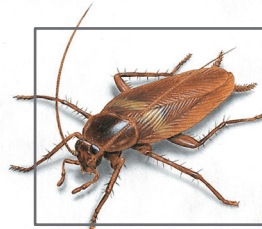
POTENTIAL TREATMENTS

- GLUEBOARD (glueboard icon)
- BAITS (bait container icon)
- TRAPS (trap icon)
- STERILANTS (sterilant bottle icon)

COCKROACHES

DIAGNOSIS

Cockroaches are a major health concern, as they can spread disease, contaminate food, trigger allergies and even cause asthma.



GERMAN COCKROACH

SYMPTOMS

Cockroaches can enter buildings through cracks, crevices, vents, sewers and drain pipes. Sometimes patients even bring them in unknowingly on personal belongings. These pests reproduce rapidly and are difficult to control.



PREVENTION TIPS

- EXCLUSION (welcome sign icon)
- SANITATION (hand cleaning icon)

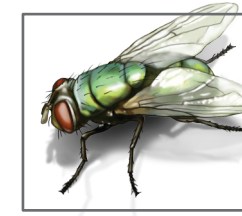
POTENTIAL TREATMENTS

- BAITS (bait container icon)
- INSECT GROWTH REGULATORS (insecticide bottle icon)
- RESIDUALS (spray bottle icon)

FLIES

DIAGNOSIS

House, phorid, cluster, blow and fruit flies are all pests that can affect healthcare facilities. House flies are associated with more than 100 pathogens, and they carry twice as many pathogens as cockroaches.



HOUSE FLY

SYMPTOMS

Flies tend to congregate near uncovered food, decaying matter and spilled liquids. They reproduce rapidly, so a population explosion can occur when the issue is not managed properly. While most common flies are active in spring and summer, species like cluster flies are quite active in winter and fall as well.



PREVENTION TIPS

- EXCLUSION (welcome sign icon)
- SANITATION (hand cleaning icon)

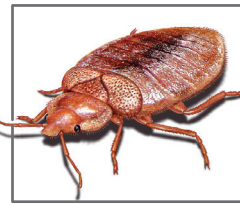
POTENTIAL TREATMENTS

- BAITS (bait container icon)
- INSECT LIGHT TRAPS (light trap icon)
- RESIDUALS (spray bottle icon)

BED BUGS

DIAGNOSIS

Bed bugs feed on human and animal blood to survive. They reproduce and spread quickly, but they aren't known to transmit human diseases.



SYMPTOMS

Common signs of bed bugs include live or dead bed bugs, skins cast off during the molting process, small spots of reddish-black fecal material and tiny cream-colored eggs usually found in dark crevices.



PREVENTION TIPS

- ONGOING INSPECTIONS (magnifying glass icon)

POTENTIAL TREATMENTS

- RESIDUALS (spray bottle icon)
- HEAT TREATMENTS (thermometer icon)